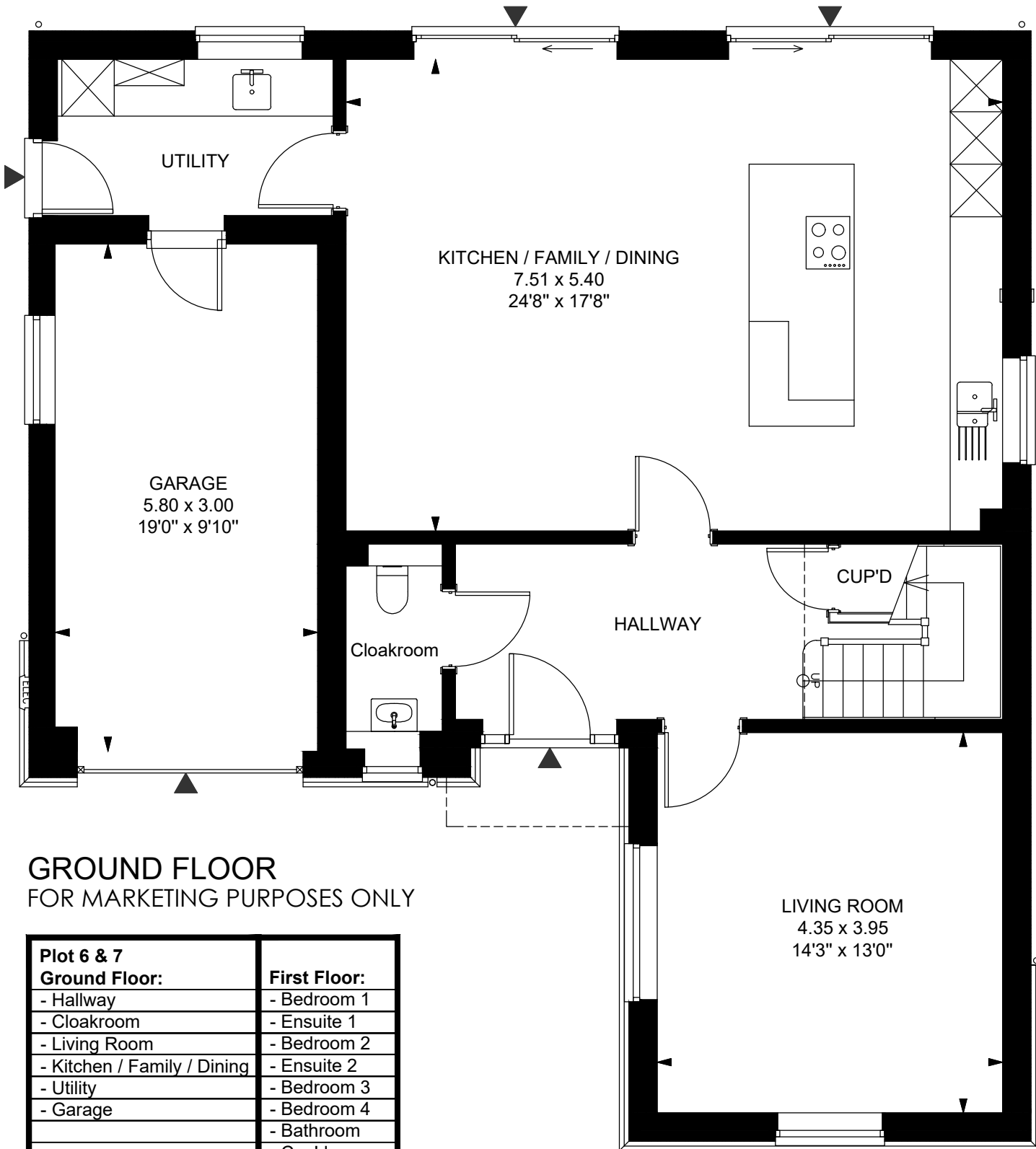


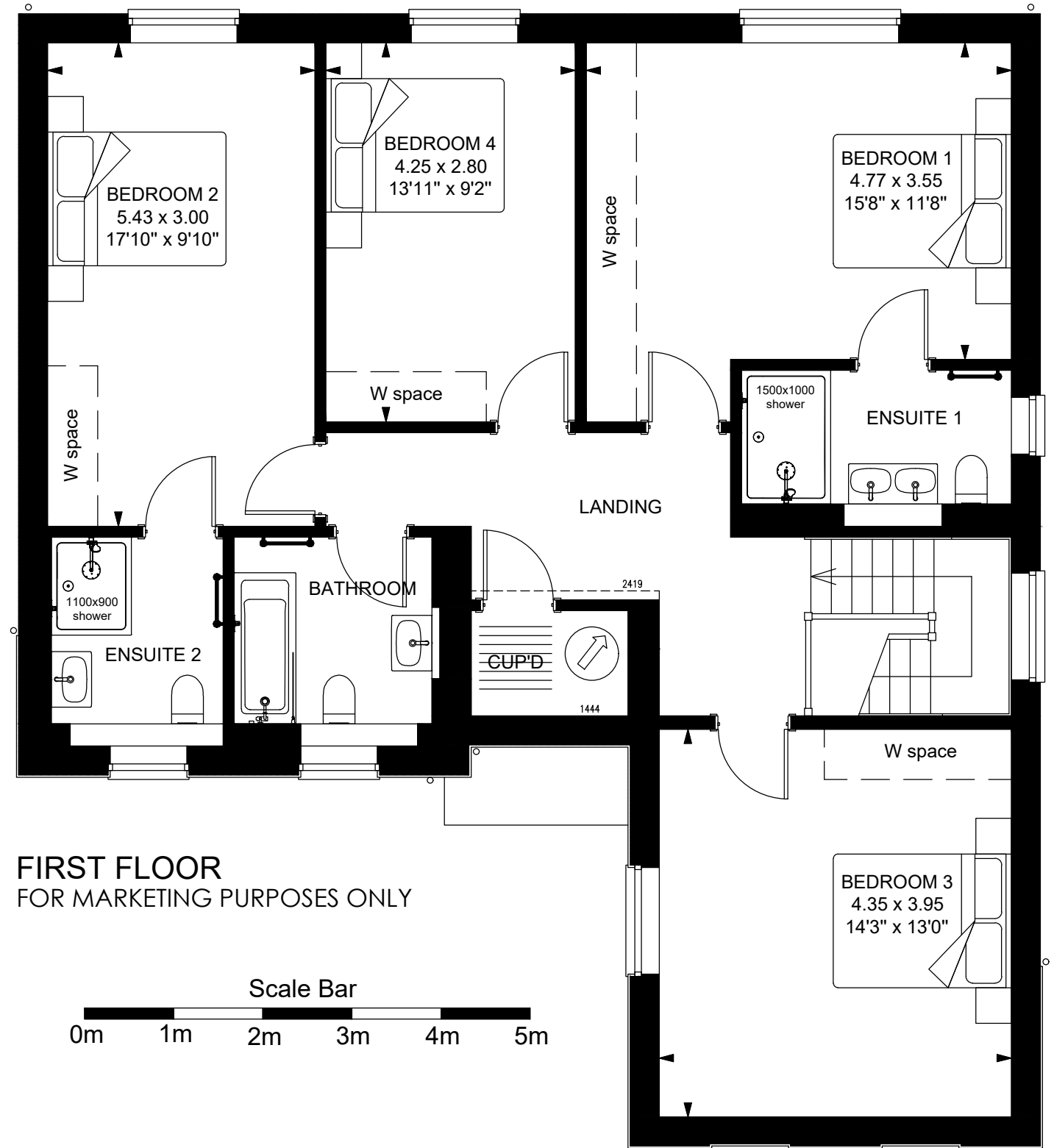
Plot 6 & 7 Osprey Close, Harpenden



GROUND FLOOR
FOR MARKETING PURPOSES ONLY

Plot 6 & 7 Ground Floor:	First Floor:
- Hallway	- Bedroom 1
- Cloakroom	- Ensuite 1
- Living Room	- Bedroom 2
- Kitchen / Family / Dining	- Ensuite 2
- Utility	- Bedroom 3
- Garage	- Bedroom 4
	- Bathroom
	- Cup'd

GIA: 202m²/2174ft² including garage



FIRST FLOOR
FOR MARKETING PURPOSES ONLY

